



Loughborough University, renowned for its progressive and ambitious attitude, is consistently ranked as a UK top 10 university by the Complete University Guide 2017-23 and voted top five in the UK for student experience by the Times and Sunday Times Good University Guide 2023.

This reflects the high-quality teaching offered, the emphasis on extra-curricular activities, and **the University's strategy to support and facilitate all students to undertake some form of professional level work experience.**

ernambinvlentl



Raising your profile

Loughborough University's students are enterprising and highly employable; equipped with the right skills to bring tangible benefits to your business. The Careers Network will offer you expert, impartial advice on the most effective ways to connect with outstanding candidates for your roles and help you raise your organisation's profile on our Loughborough and London campuses.



Events

Having a presence on-campus allows you to introduce your company to pro-active students who are interested in learning more about your organisation, the opportunities on offer and becoming your future talent!

We can partner with you to understand your aims and needs, devise an impactful event and give guidance on its promotion and organisation. Our experienced team have supported numerous Employers to increase engagement through a vast array of interactive activities some of which include: Our high-profile recruitment fairs in Autumn and Spring – which attract more than 3,000 students; drop-in attractions in high footfall areas; employability skills training sessions; mock assessment or interview days; sector specific insight events; sponsorship and presentations.

There are always new innovative ways to create a presence and we embrace the opportunity to develop bespoke events specifically designed for your needs; just get in touch and we will be delighted to explore ideas.

employer.services@lboro.ac.uk

Vacancy advertisement – Careers Online

Our vacancy portal – Careers Online – is exclusive to Loughborough University cohorts, reaching almost 20,000 students across a wide range of degree disciplines.

By registering, you will have complete control to advertise your work opportunities to our students, set preferred deadlines, view applications, shortlist candidates and manage interviews in the way that fits with your timescales best. Alongside the advertisement of graduate, placements and internship opportunities we also welcome part-time work and casual paid opportunities to be advertised onto the Careers Portal.

You can register onto Careers Online for free; find out here how to get started.

lboro.ac.uk/services/careers/employers/advertising

London Campus opportunities

Established exclusively for postgraduate study and research, Loughborough University London brings with it a host of progressive opportunities for employers to help shape the curriculum to address industry needs and to access top level talent.

Based in Queen Elizabeth Olympic Park, part of Here East (London's new innovation quarter), our Loughborough London campus 'Collaborative Project' programme aims to take the classroom into the workplace and provide students with multiple touch points with industry to develop highly employable, 'work ready' graduates. Through this programme, you can also have the unique opportunity to influence the development of your potential future hires, ensuring that they develop the skills your business needs, and so build a talent pipeline for the future.

Additional ways to interact with our London campus post-graduate students include; Delivering guest lectures; offering volunteering opportunities; mentoring; hosting site visits; offering placements / internships or setting real-life projects.

www.lborolondon.ac.uk





Recruit our students

Loughborough University's Careers Network invites you to showcase your company in front of our students: Your future talent! Providing students with a chance to experience your workplace is an effective method of attracting talent to boost your recruitment process – and the exposure will help amplify your voice amongst students as a company of value that they aspire to work for.

Our students have proven the impact and value they can bring to your business:

"I would recommend using the Careers Network as their support, experience and expertise has made this a smooth and effective process that has had a significantly positive effect on our business."

Hashtag Me

Diversify your talent

We pride ourselves on fostering an inclusive student community and acknowledge the value that students from diverse backgrounds can bring to organisations.

Loughborough's Careers Network actively seek to connect with organisations looking to diversify their graduate talent pool and offer a range of methods and activities to engage with our students from diverse groups such as:

- Getting involved in our Flagship

from dive46 (en-GB)/MCIJEMAsi0 90 (er)10 (se gr)30ID 240 BDC BT 0 0 07.793 304.0717 Tm(•)TjETBT/Span 26 MC 5 (ext 1) BDC 0 0 02.5833

SME support – Talent Match Internships

Loughborough Talent Match has been designed to help SME organisations, both regionally and nationwide, gain access to our talented, driven students to utilise their skills and expertise for short term projects and resourcing. It is a great chance to bring a student into the business and utilise their skillset, along with their desire to create impact and add value to the business. In addition, our free recruitment support ensures a stress-free service from advertising roles on our careers' portal, to sifting through the applications.

The programme incorporates two streams – Finalist Internships and Micro-Internships – both of which have potential funding opportunities for SMEs:

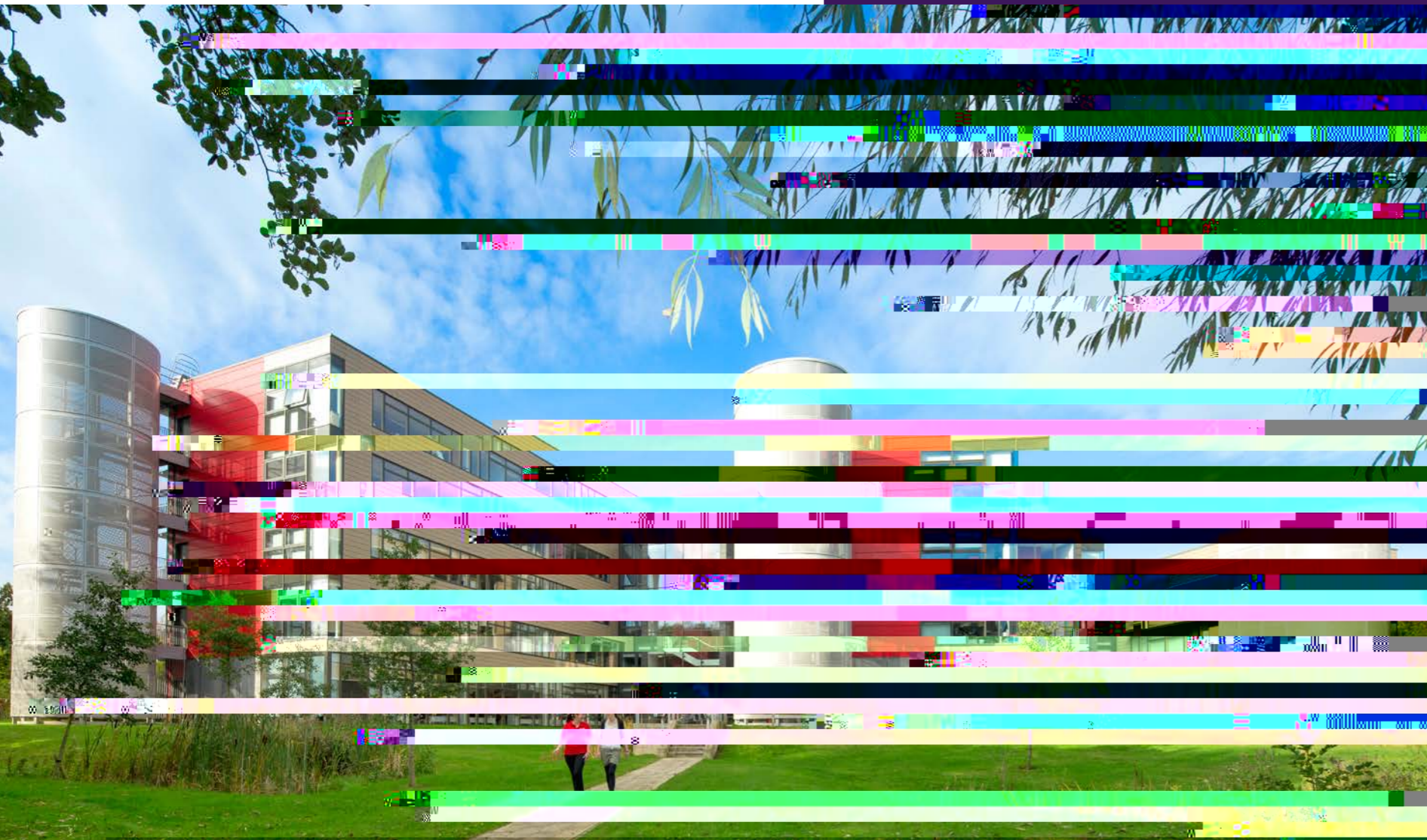
Finalist Internships: These are for a fixed duration of 140 hours (typically 4 weeks, 35 hours per week) with roles being promoted to Finalists in the Autumn term and the internship taking place from July onwards, once exams are completed.

Micro-Internships: 50 hour opportunities aimed at 1st and 2nd years, that are typically completed over 4-8 weeks (ensuring students are able to complete them alongside their studies). This is an ideal opportunity to get support on a project or piece of work and to engage our students early in their university journey.

Tailored recruitment and engagement – Talent Match+

Talent Match+ is about providing a more **tailored recruitment service** for any organisation looking to connect and recruit our students or finalists, whether this is for short-term internships, year placements, or graduate level roles.

Our expert team are on hand to support and guide you through every stage of the recruitment process from advice about taking on a student, or the roles you are looking to recruit and how, right through to a full advertisement,



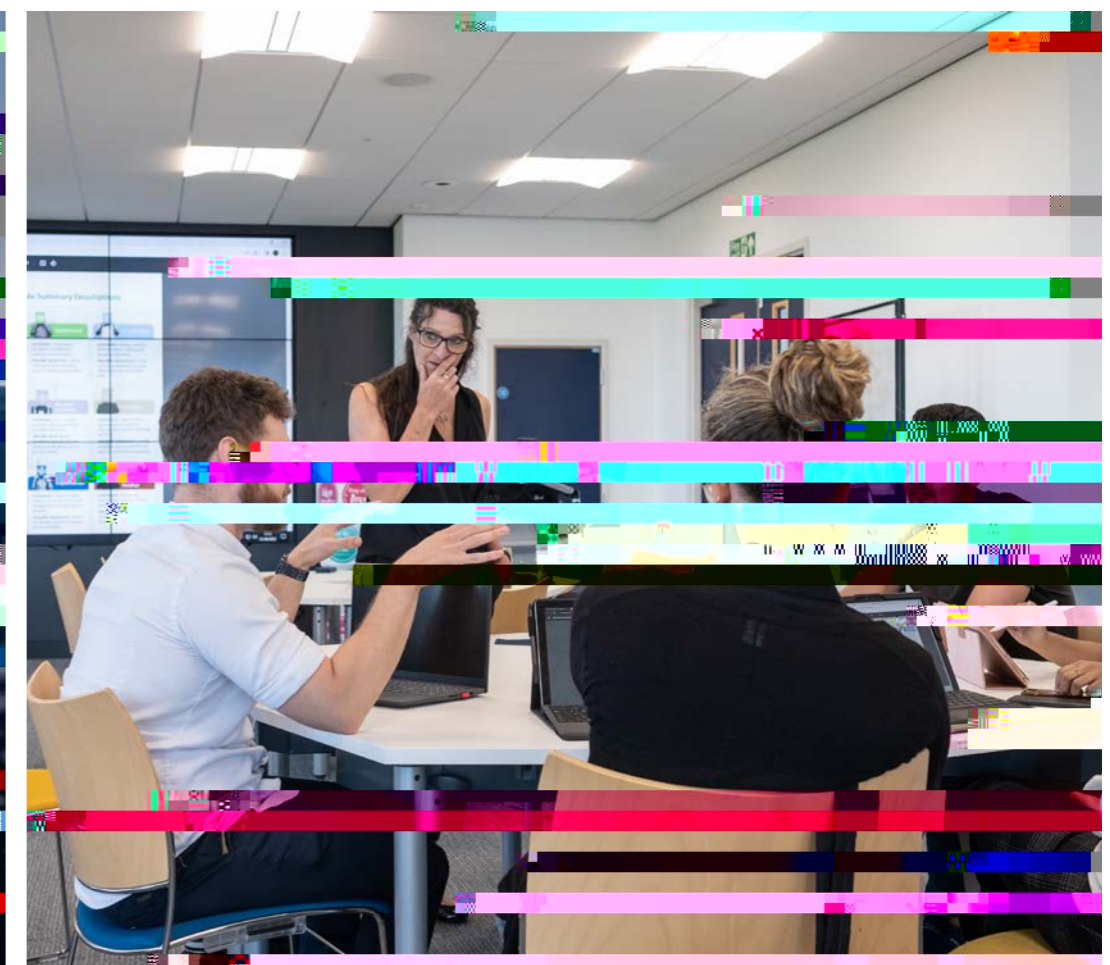
Wider University services

Alongside the services already outlined, the Careers Network team can provide guidance and information on the wider range of options that Loughborough University has to offer.

Our Science and Enterprise Park – LUSEP – offers organisations an unrivalled opportunity to join a dynamic innovation community with a world-class research base and graduate supply.

We can partner with start-ups to global corporations, as well as public and voluntary sectors, to help you realise your business goals supporting growth, innovation, skills development, and sustainability.

Loughborough's extensive, world class and leading expertise and facilities can be harnessed by your organisation through a broad array of services such as: Research & Commercial Expertise – recently identified by Research Excellence Framework as being 'world-leading' and 'internationally-excellent'; Knowledge Transfer Partnerships; access to our excellent Alumni network; use of award-winning facilities; our Loughborough Enterprise Network (LEN) which supports students in learning entrepreneurial skills to bring innovation practices to your organisation. We do this by running a range of activities in conjunction with employers to support the entrepreneurial mindset including Hackathons, Skill development sessions and Networking events.





QS GRADUATE EMPLOYABILITY
RANKINGS 2022

**NO.1 IN THE UK FOR
EMPLOYER-STUDENT
CONNECTIONS AND WITHIN
THE TOP 25 GLOBALLY**

Get in touch to discover more!

Careers Network
Loughborough University

E: employer.services@lboro.ac.uk
lboro.ac.uk/careers

Loughborough University London
Queen Elizabeth Olympic Park

E: employer.services@lboro.ac.uk
[@LboroJobNetwork](https://lborolondon.ac.uk/business/employers)
lborolondon.ac.uk/business/employers